

**YOT**  
POWER  
CATAMARANS



EXPERIENCE THE  
**POWER OF FUN**

by **CATANA**Group

**YOT 36 / YOT 41**

# EXPERIENCE THE POWER OF FUN

THE FUTURE OF FUN ON THE WATER.

EXPERIENCE UNMATCHED POWER AND FUN.

YOT POWER CATAMARANS IS AN INNOVATIVE  
CONCEPT BLENDING CUTTING-EDGE DESIGN  
WITH EFFORTLESS FUNCTIONALITY.

YOT IS MORE THAN A BOAT; IT'S A BOLD NEW VISION  
FOR LIFE ON THE WATER, A LIFESTYLE REIMAGINED.

SEA-WORTHY.  
FUN-WORTHY.  
FUTURE-READY.

THE POWERBOAT OF TOMORROW IS YOURS TODAY.  
RIDE THE WAVES WITH SPEED, EASE, AND STYLE.

SLOW DOWN, SAVOUR THE MOMENT, AND ENJOY  
THE SPACE THAT BRINGS IT ALL TOGETHER.

TAKE YOUR TIME. EXPAND YOUR HORIZONS.  
WELCOME TO THE YOT EXPERIENCE.

# EXPERIENCE THE POWER OF FUN

## SAFETY AT CORE

YOT Catamarans were designed by renowned naval architect JnJ Design with one main focus: provide families and friends with great times in complete safety. Whatever the course, YotPower cats remain stable with almost no heeling, providing comfort and safety.

## SMART & MODERN

High performances, wide spaces, 2 cabins... Outstanding features with no compromises on style: stand out with class on a YOT.

## AGILE PLEASURE

Powered by two best-in-class outboards, YOT Catamarans combine excitement at high speed and easy maneuvering in marinas. With engines apart, docking & mooring is made easy.

## STABLE BY NATURE

Benefit from the know-how and experience of a catamaran boatbuilding expert to enjoy smooth rides. Whatever the sea state, no slamming, no spray thanks to the “air cushion effect”





YOT 36



YOT 41

## YOT OUTBOARD RANGE

**Sleek and elegant design**  
thanks to a great length-  
to-beam ratio

### OPENING SIDE PLATFORMS

unmatched deck area to be  
connected to the sea

### PERFORMANCES

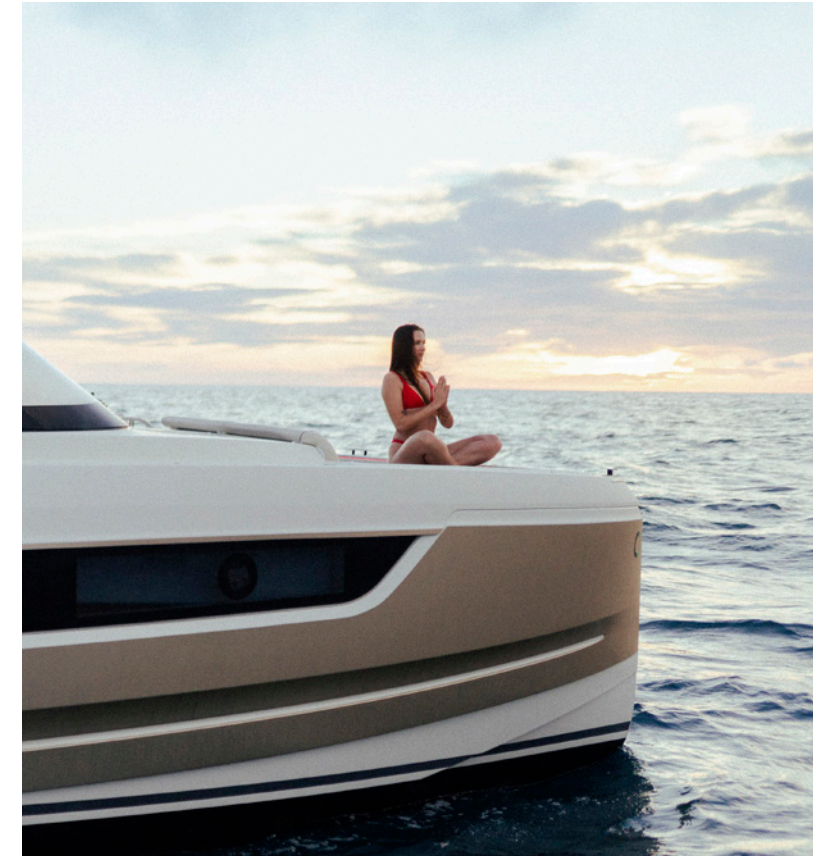
efficient hull design provides  
a comfortable cruising speed  
between 23-25 knots\*

Boats are powered by 2 outboard  
engines with state-of-the art control  
systems and dashboard

### VERSATILITY

allows for fun dayboat  
to high seas passage

\*Depending on the boat load,  
engine selection and sea state







# TABLE OF CONTENTS

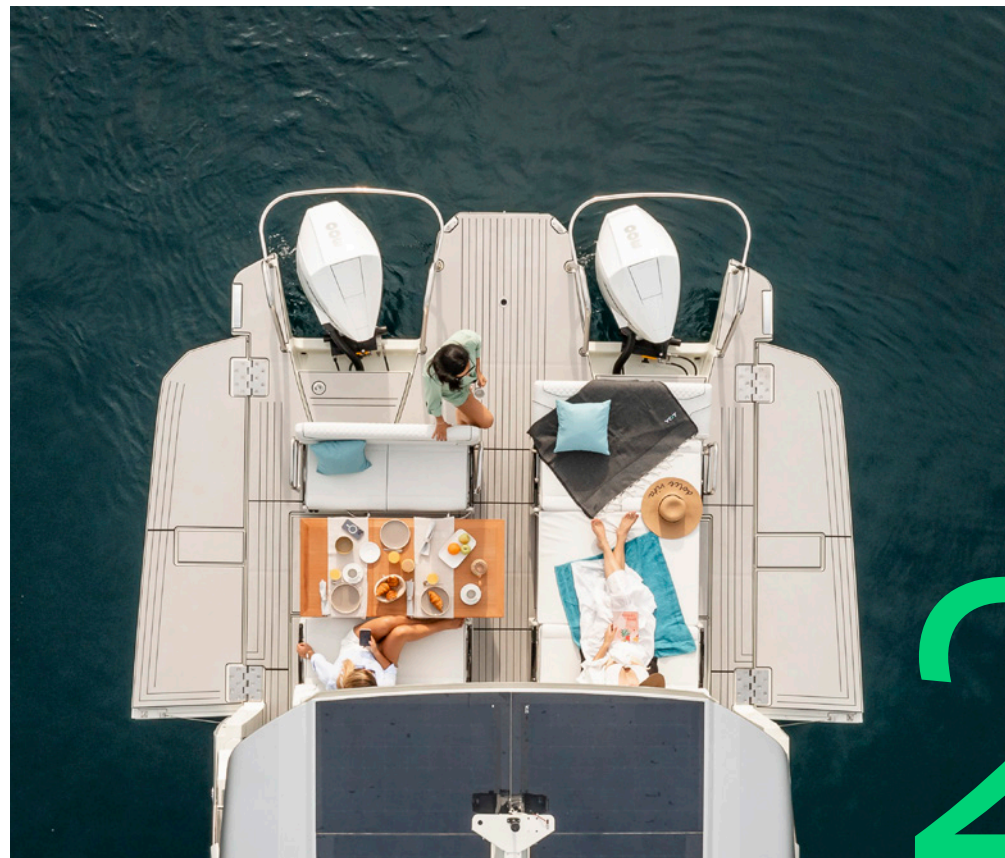
|               |  |                                     |
|---------------|--|-------------------------------------|
| <b>YOT 36</b> | <b>3.99m / 13ft OF<br/>UNLIMITED FUN</b> | <b>TECHNICAL<br/>SPECIFICATIONS</b> |
|               | <b>PAGE 09</b>                           | <b>PAGE 17</b>                      |
| <hr/>         |  |                                     |
| <b>YOT 41</b> | <b>ENDLESS SPACE<br/>INSIDE-OUT</b>      | <b>TECHNICAL<br/>SPECIFICATIONS</b> |
|               | <b>PAGE 22</b>                           | <b>PAGE 27</b>                      |



YOT 36







3.99m / 13ft  
**OF UNLIMITED  
 FUN**

**20M<sup>2</sup>**

## YOT36 Advantages at a glance

### WALKAROUND DESIGN

monohull layout fitted  
 on a twin hull platform

### OPENING PLATFORMS

offering a terrace of almost  
 20m<sup>2</sup> on the sea

### TWO CABINS

each designed with own access,  
 toilet and shower

### 3 AREAS

Narrow beam to fit in  
 standard marina berths





3.99  
WIDTH METER

MAX POWER  
600  
HP

10.92  
LENGTH METER





“Setting off with our YOT 36 this summer was an exceptional experience. We are at our first anchorage at Anse des Vieilles (France), everyone felt at home. With the side platforms folded down in the blink of an eye, we found ourselves as a family enjoying a lovely swim and creating magical memories at sunset. It was perfect for relaxing and letting the kids have fun mask and snorkel.”

Stéphanie and Vincent, owners of a YOT 36

YOT 36



1

15



2

#### 1 - FUNCTIONAL DESIGN

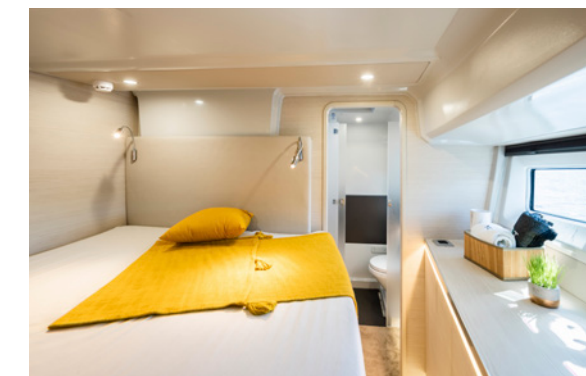
Wetbar space for cooking (grill, fridges...)

#### 2 - SPACIOUS LOUNGE

area opened to the sea with large, friendly benches, convertible into sun beds

#### 3 - COMFORT AND SPACE ON BOARD

the owner cabin offers an amazing sea view



3

EXPERIENCE THE POWER OF FUN



YOT IS  
DESIGN WITH EMOTION.  
SPACES WITH TIME TO ENJOY.  
COMFORT WITH SPEED.  
SAFETY WITH STYLE.  
ENJOY LIFE.  
LIFE AT SEA.

LIFE IN A YOT.







## TECHNICAL SPECIFICATIONS

|   |                                |   |                |
|---|--------------------------------|---|----------------|
| <b>CE CATEGORY</b><br>CLASSIFICATION CE                         | <b>B</b>                       | <b>FUEL</b><br>FUEL                                     | <b>2x575 L</b> |
| <b>PASSENGERS</b><br>PASSAGERDW                                 | <b>10</b>                      | <b>FRESH WATER</b><br>EAU DOUCE                         | <b>2x150 L</b> |
| <b>LOA</b><br>LHT   | <b>10.92M</b>                  | <b>HOLDING TANK</b><br>EAUX NOIRES                      | <b>100 L</b>   |
| <b>BEAM</b><br>LARGEUR  | <b>3.99M</b>                   | <b>GREY WATER TANK (OPTION)</b><br>EAUX GRISES (OPTION) | <b>100 L</b>   |
| <b>BEAM with platforms open</b><br>LARGEUR PLATEFORMES OUVERTES | <b>5.40M</b>                   | <b>CABINS</b><br>CABINES                                | <b>2</b>       |
| <b>PROPULSION (Std)</b><br>PROPULSION (standard)                | <b>2 x MERCURY V6 - 225 HP</b> | <b>BATHROOMS</b><br>SALLES DE BAIN                      | <b>2</b>       |
| <b>PROPULSION (option)</b><br>PROPULSION (option)               | <b>2 x MERCURY V8 - 300 HP</b> |   |                |



YOT 41







## ENDLESS SPACE INSIDE-OUT

Over 50m<sup>2</sup> overall deck area  
25m<sup>2</sup> aft deck

### HUGE VOLUME INSIDE

each hull to accommodate 2 cabins,  
each with own toilet and shower

### BOWRIDER DESIGN

11m central alley providing  
a dedicated access to each cabin

### A BEAM OF 4.49M

expanded to almost 6m  
with opened platforms

### UP TO 5 SUNBEDS

over 20 cup holders, up to 3 fridges:  
let the party start!

EXPERIENCE THE POWER OF FUN



4.49  
WIDTH METER

MAX POWER  
800  
HP

12.57  
LENGTH METER







“We are so happy to enjoy what our YOT41 boat has to offer: infinite space, natural stability, both under way and at anchor, a great feeling of security: in short, everything we were looking for: comfort, pleasure, fun and ease!”

25M<sup>2</sup>

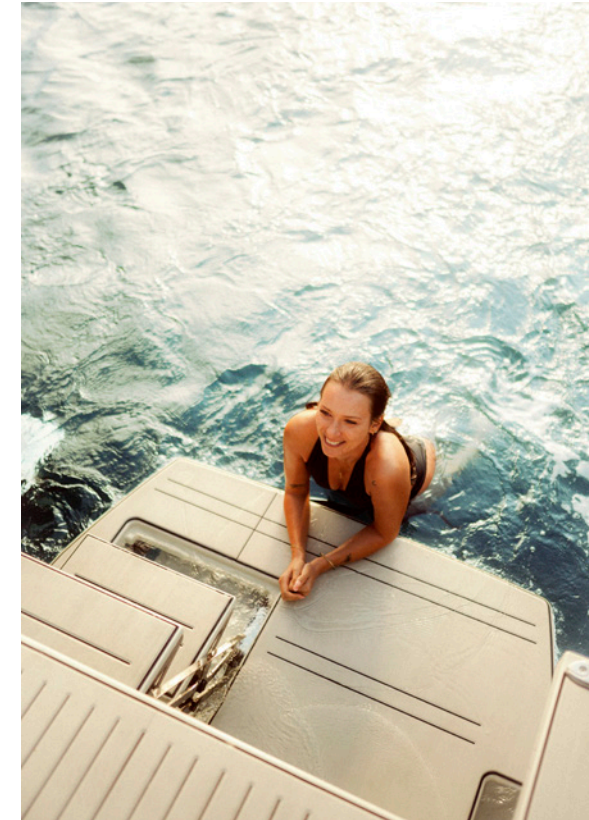
YOT 41



1



2



3

All this onboard a 41-footer  
Let figures talk

**1 - GENEROUS SPACES**  
modularity is the word!

**2 - 2 SPACIOUS CABINS**  
each equipped with comfortable mattresses and plenty of storage

**3 - ELECTRIC AFT PLATFORM**  
to be as close as possible to the water

EXPERIENCE THE POWER OF FUN

27





# TECHNICAL SPECIFICATIONS

|   |                                 |   |               |
|---|---------------------------------|---|---------------|
| <b>CE CATEGORY</b><br>CLASSIFICATION CE                         | <b>B</b>                        | <b>FUEL</b><br>FUEL                                     | <b>1700 L</b> |
| <b>PASSENGERS</b><br>PASSAGERDW                                 | <b>12</b>                       | <b>FRESH WATER</b><br>EAU DOUCE                         | <b>400 L</b>  |
| <b>LOA</b><br>LHT   | <b>12.57M</b>                   | <b>HOLDING TANK</b><br>EAUX NOIRES                      | <b>100 L</b>  |
| <b>BEAM</b><br>LARGEUR  | <b>4.49M</b>                    | <b>GREY WATER TANK (OPTION)</b><br>EAUX GRISES (OPTION) | <b>100 L</b>  |
| <b>BEAM with platforms open</b><br>LARGEUR PLATEFORMES OUVERTES | <b>5.82M</b>                    | <b>CABINS</b><br>CABINES                                | <b>2</b>      |
| <b>PROPULSION (Std)</b><br>PROPULSION (standard)                | <b>2 x MERCURY V8 - 300 HP</b>  | <b>BATHROOMS</b><br>SALLES DE BAIN                      | <b>2</b>      |
| <b>PROPULSION (option)</b><br>PROPULSION (option)               | <b>2 x MERCURY V10 - 400 HP</b> |   |               |



**“Catana Group’s DNA lies in its ability to deeply understand and anticipate market trends, and it is through this lens that we envisioned YOT”**

**Boris Compagnon**

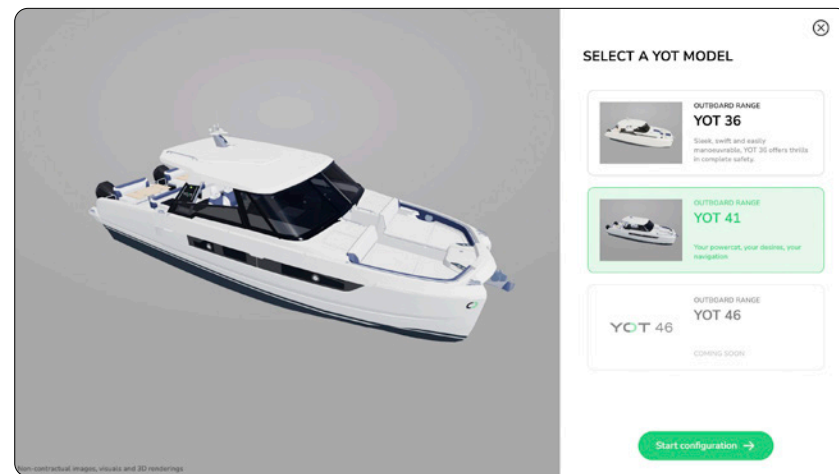




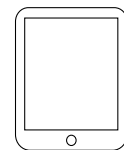
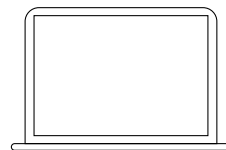
# YOT POWER CATAMARANS CONFIGURATOR

GO TO OUR CONFIGURATOR BY SCANNING THE QR CODE BELOW OR DIRECTLY AT

[yot-power-catamarans.com/fr/configure](http://yot-power-catamarans.com/fr/configure)



on smartphone, desktop and tablet



YOT POWER CATAMARANS - CHANTIER CATANA - ZONE TECHNIQUE DU PORT - 66140 CANET EN ROUSSILLON - FRANCE  
info@catanagroup.com - www.yot-power-catamarans.com





Head Office: Zone Technique du Port, 66140 Canet en Roussillon, France  
+33 (0) 4 68 80 13 13, [info@yot-power.com](mailto:info@yot-power.com), [yot-power-catamarans.com/fr](http://yot-power-catamarans.com/fr)

DISTRIBUTED BY: